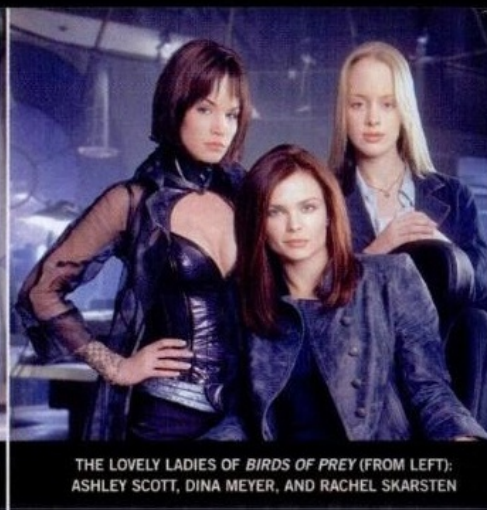




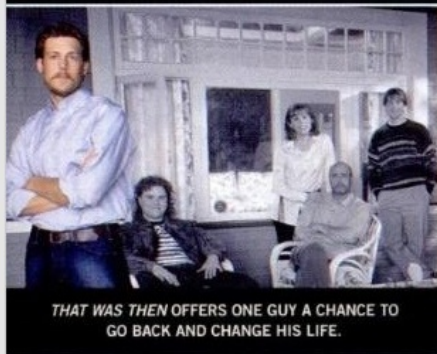
MR. LANE GOES TO WASHINGTON IN HIS NEW SITCOM.



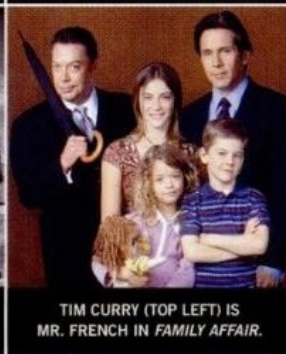
FROM LEFT: KATHLEEN ROBERTSON, CHYLER LEIGH, AND GRETCHEN MOL PLAY AT THE GIRLS CLUB.



THE LOVELY LADIES OF BIRDS OF PREY (FROM LEFT): ASHLEY SCOTT, DINA MEYER, AND RACHEL SKARSTEN



THAT WAS THEN OFFERS ONE GUY A CHANCE TO GO BACK AND CHANGE HIS LIFE.



TIM CURRY (TOP LEFT) IS MR. FRENCH IN FAMILY AFFAIR.



DR. WEAVER (LAURA INNES) MAY GET SOME LOVIN' ON ER.



television preview

New Series

Family Affair

Buffy, Jody, and Cissy are back in this remake of the TV classic about three siblings who go to live with their bachelor uncle. But it's their fussy butler, Mr. French (Tim Curry), who sets our gaydar off. (Thursdays, 8 P.M., WB) (all times Eastern)

Girls Club / Birds of Prey

Two shows with a troika of fierce ladies. (One more and it's a trend!) *Girls*, David E. Kelley's latest lawyer concoction, is set in San Francisco and boasts a threesome (Kathleen Robertson, Gretchen Mol, and Chyler Leigh) who kick some legal butt. *Birds of Prey* looks to be the next *Xena* with the daughter of Batman and Catwoman teaming up with the former Batgirl and a young woman who sees the future to save New Gotham. (*Girls*: Mondays, 9 P.M., Fox; *Birds*: Wednesdays, 9 P.M., WB)

Do Over / That Was Then

Two shows with a shockingly similar premise: A man in his 30s is blasted back into his 1980s high school years and has the ability to relive his life, knowing everything he knows now. If only it could really happen. (*Do Over*: Thursdays, 8:30 P.M., WB; *Then*: Fridays, 9 P.M., ABC)

The Real World: Las Vegas

No homos this time around, but one of the cast members, Brynn, does have a gay dad! And from what we hear, this is a pretty promiscuous group, so anything goes. (Tuesdays, 10 P.M., MTV)

Hidden Hills

This show about a suburban family features a stereotypically queeny secondary character who everyone thinks is gay but really is a "happily married father." Wow, that's hysterical. Will they be breaking out the blackface too? (Tuesdays, 9:30 P.M., NBC)

Telefilm

Normal

Based on Jane Anderson's play *Looking for Normal*, Tom Wilkinson plays a husband (to Jessica Lange) and father who decides to get a sex change. (December, HBO)

Mid Season

Untitled Nathan Lane Project

Nathan Lane plays an openly gay former TV star who becomes a congressman. (CBS)

Oliver Beene

On this series, set in the early '60s with flash-forwards to the '00s, we meet the title character's flaming friend, Michael, who keeps Judy Garland pictures in his locker and naturally turns out to be gay in the present time. (Fox)

Returning Series

Sad to say, but this fall there are no new queer folk joining the network TV landscape, and we are left with just six regular characters—down from 15 after losing shows like *Spin City*, *Dark Angel*, *Felicity*, *The Ellen Show*, and *The Education of Max Bickford*—on prime-time: the magical Willow Rosenberg begins life without girlfriend Tara on *Buffy the Vampire Slayer* (Tuesdays, 8 P.M., UPN), John Irvin keeps the office running smoothly on *NYPD Blue* (Tuesdays, 10 P.M., ABC), Dr. Kerry Weaver is rumored to be getting serious with her girlfriend on *ER* (Thursdays, 10 P.M., NBC), Jack McPhee enters his sophomore year at college on *Dawson's Creek* (Wednesdays, 8 P.M., WB), and of course Will Truman and Jack McFarland will be up to their usual high jinks on *Will & Grace* (Thursdays, 9 P.M., NBC).

ILLUSTRATION BY GILBERT FORD